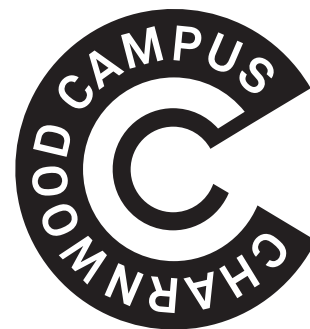


Facilitating your future

Best in the industry



Charnwood B45



Prestigious
working
environment
created by
exceptional
minds

Welcome to Charnwood B45

B45 (Large Scale Laboratory) was a fully maintained cGMP facility operating as a pharmaceutical research and development facility over 794m².

The large-scale laboratory is housed in a self-contained building with good vehicular access routes. It contains a ground floor laboratory area with some office space and changing facilities and a first floor large open space office and plant rooms.

The laboratories contain fume cupboards housing 25L or 50L reactor systems, separate vacuum try drier lobbies and mobile island benches for storage.

Equipment is manually operated with computer controlled data logging system and included 5 Glass Lined Mild Steel (GLMS) vessels, 3 x 25L, 2 x 50L, 2 GLSS cryogenic vessels 1 x 50L, 1 x 25L, 1 GLMS hydrogenator 25L.

Adaptation of new technologies to streamline the processes included:

- Process Analytical Technology probes for in-line monitoring of reactions
- Disposable powder containment technology for handling hazardous materials 20L rotary evaporator

Solid intermediates and APIs were isolated and dried in batch quantities ranging from 0.5 – 5 kg using a range of Nutsche filters, pressure filters and vacuum tray dryers.





Charnwood **B45**

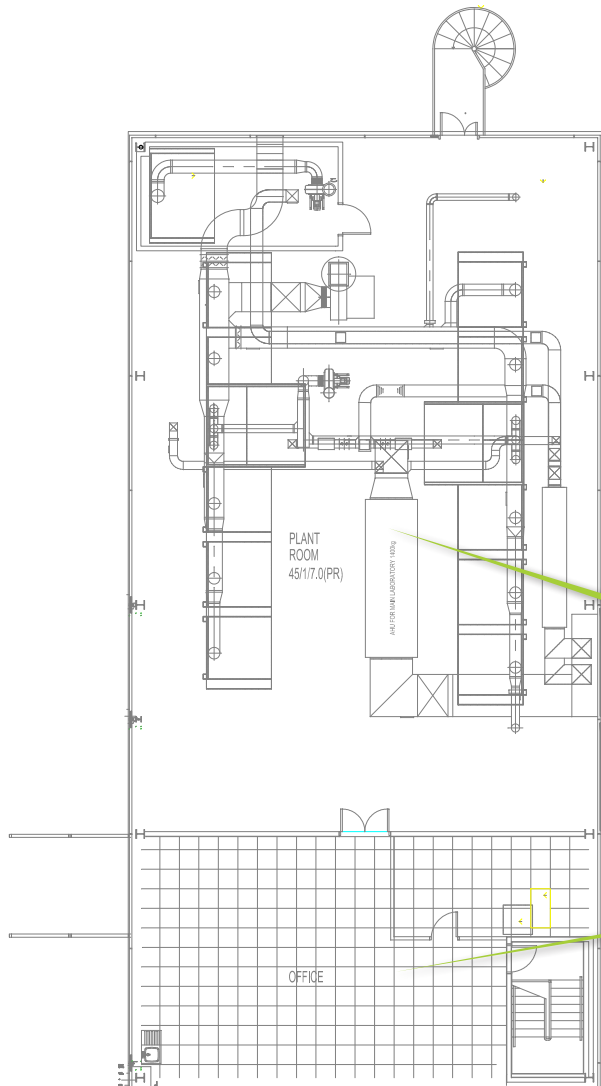
Motivating Environment

Charnwood B45 includes:

- Chemistry Laboratories
- Biochemistry Laboratories
- 1600m² of Flexible laboratory Space
- Associated Offices suitable for Instruments and Automation



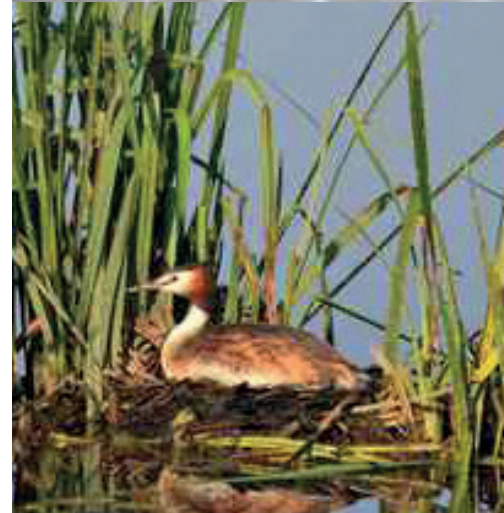
Ground Floor Plan



SELF-CONTAINED
LABORATORIES

OPEN PLAN OFFICE

First Floor Plan



For business professionals to meet like-minded individuals



Charnwood Campus

The land of opportunities

Join a unique and inspiring place to work; boasting world-class laboratory and office facilities with the latest technology, the campus benefits from an idyllic rural location with landscaped surroundings.

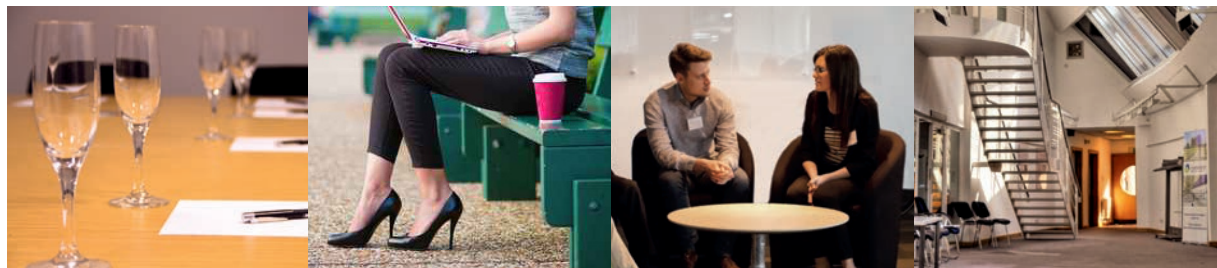
The central hub and plaza, provides a space for business professionals to meet like-minded individuals and benefit from the food and cafeteria facilities or simply relax.

The Campus offers;

- Conferencing, workshop and event facilities for up to 150 delegates,
- Various types of modern meetings rooms for 12-20 people,
- Glass walkways which link the buildings,
- High speed Wi-Fi connectivity for visitors,
- Ample parking and cycle shelters,
- Secure 24/7 on-site security incorporating a gatehouse, perimeter security and CCTV

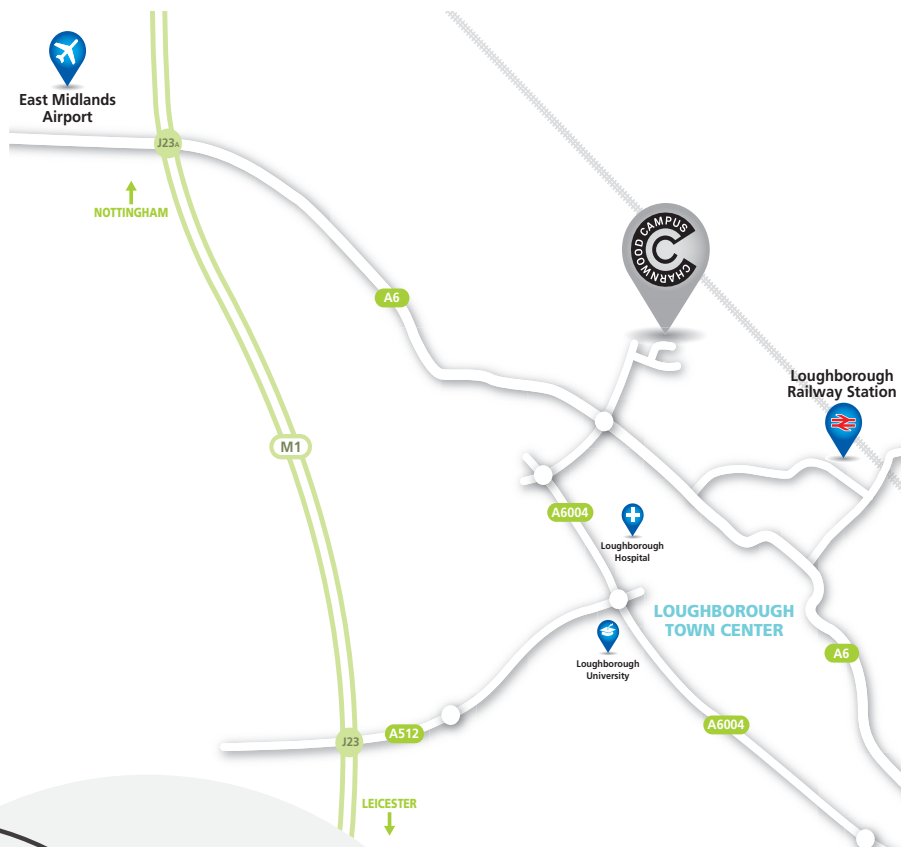
Coming soon;

- A spacious, newly designed cafeteria suitable for corporate and private events with an extensive range of catering options,
- Air conditioned health and wellbeing centre with gym equipment and workout studio,
- Retail complex,
- Bus and taxi services,



In the heart of the UK

Ideally located within touching distance of the main spine road running down the UK, M1. With major road and rail network links, east midlands airport and main cities in the midlands on our doorstep.



Ideally situated on the outskirts of Loughborough, in the heart of the UK, the Campus benefits from excellent transport links.

By Road

Convenient access to Junction 23 of the M1.

By Air

East Midlands Airport is 9 miles away and offers links to European and North African destinations.

By Train

East Midland Mainline rail route to London. Excellent rail links to other major UK cities.



Charnwood Campus
Summerpool Road
Off Bakewell Road
Loughborough
LE11 5RD
Sat Nav Ref: LE11 5RH

Tel: +44 116 318 3546
Email: info@charnwoodcampus.com
www.charnwoodcampus.com